



## **IMPORTANT NOTICE FOR ON MACHINE INSTALLATIONS**

An installation of a Drying Cylinder Sleeve can only be successful if customer co-operation is forthcoming.

Our team who will install the sleeve will rely at certain times on Mill personnel and facilities.

Please study this document and if in doubt contact us.

### **A) PRE-INSTALLATION**

- 1) Items such as ladders and walkways are to be provided and placed by the customer to give the necessary access to the working surfaces and surrounding area.
- 2) The surface of the drying cylinder or roll must be clean of any corrosion, contamination, previous covers etc to allow the immediate fitting of the new sleeve. Our Engineers bring with them cylinder cleaning equipment, however, this is not included in the price of the sleeve, or its normal installation charge.
- 3) The area surrounding the drying cylinder or roll must be clean of any dirt, grease etc to prevent contamination of the new sleeve, the installation tooling or the installation Engineers. It is essential that cleanliness be maintained to assure an optimum installation. The support structure, driving gear covers, cylinder ends, bearing cap etc for drying cylinders should be given particular attention with respect to cleanliness.
- 4) Access to washroom facilities is a necessity for the use of our Engineers.
- 5) The working environment should be as good as possible. Any adjacent equipment such as other drying cylinders should be at ambient temperatures and stationary.

- 6) Electrical power requirements are
  - a) 3 Phase 380/415 V-10 KW Outlet  
(3 Phase plus Neutral Plus Earth)  
**PLUS**
  - b) 2 Off Single Phase 240 V-3 KW Outlet

All within six metres of the working position.

- 7) Good illumination is to be provided at the working face of the drying cylinder or roll.
- 8) Felt should be removed from the immediate installation area.
- 9) A support pole over the length of the cylinder capable of taking 40KG is required.
- 10) Clearance from one end of the drying cylinder is required for our welding equipment throughout the access area. A Drawing is attached showing the access required.

If this access is limited before we can install, however, we will need to know the access limitation and bring special equipment.

- 11) Any Doctor Blades **MUST BE** removed

**IMPORTANT NOTICE**

***IN THE INTERESTS OF SAFETY, WE MUST INSIST THAT NO OTHER WORK IS CARRIED OUT ABOVE, ADJACENT OR BELOW THE CYLINDERS WHILST THE INSTALLATION IS UNDERWAY. SHOULD THIS BE IGNORED, WE WILL ACCEPT NO RESPONSIBILITY FOR ANY INJURY TO PERSONNEL.***

**B) DURING INSTALLATION**

- 1) It is recommended that a customers representative is in attendance at all times. In the case of foreign (non English Language) countries a person speaking fluent English **must** be present.
- 2) The cylinder to be covered **must** be cold before our Engineers can start the installation.
- 3) The drying cylinder **must** be able to be turned slowly to our Engineers instructions.
- 4) The drying cylinder heating will be required according to our Engineers instructions.

Heat will **not** be required during the initial period of the installation whilst the Engineers weld the sleeve together.

After this phase the sleeve is shrunk down and a surface temperature on the cylinder of 50-60°C is required for one to two hours depending on the size of the cylinder.

The last phase is for the adhesive to be applied. Here again surface temperature of 50-60°C is required for one to two hours. The temperature will need to be raised to the functioning temperature of the cylinder for a period of two hours at the end of installation to cure the adhesive.

\*It is **imperative** the temperature is precisely controlled by your personnel.

\*It is **imperative** the cylinder is able to be continuously and slowly rotated during this phase.

\*It is **imperative** that the lighting illumination of the cylinder surface is uninterrupted during this phase.

### C) **COMMISSIONING**

1) On completion, the customers' representative should inspect the work and will be expected by our Engineers to sign the acceptance form.

At the same time our Engineers will give specific instructions regarding commissioning.

2) Our Engineers will leave cover with reinforcement tape on the ends. It is best if this can be left in place.

3) Any further queries by the customer should be made before our Engineers depart.

#### **Holscot Fluoroplastics Ltd**

Alma Park Road, Alma Park  
Industrial Estate  
Grantham

Lincs NG31 9SE

**Tel +44 (0)1476 574771**

**Fax +44 (0)1476 563542**

#### **Holscot Northern Division**

Unit 9, Burnmill Industrial Estate,  
Burnmill Road,  
Leven

Fife KY8 4RA


**Tel + 44 (0)1333 427555**

**Fax +44 (0)1333 422929**

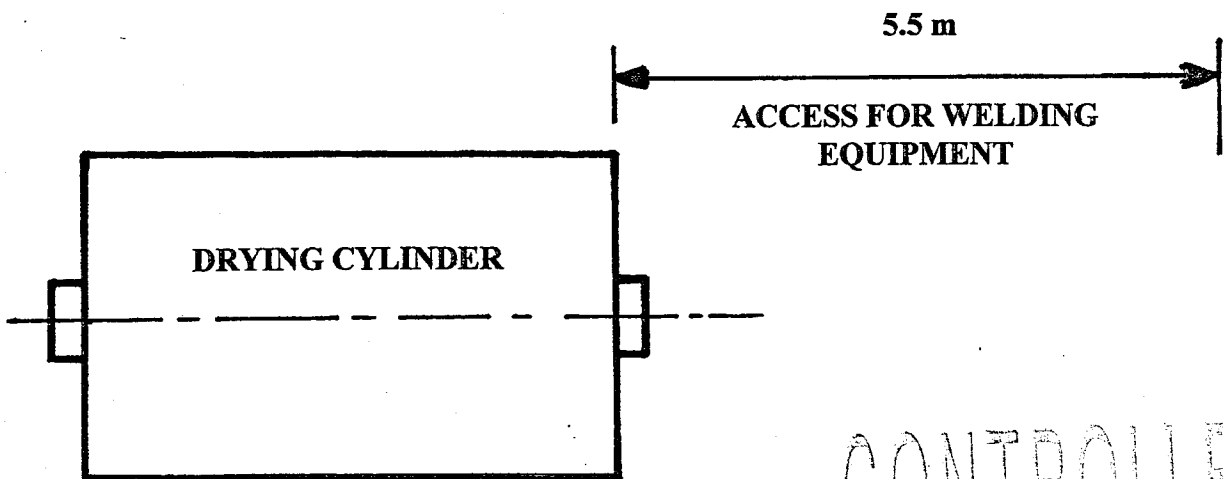
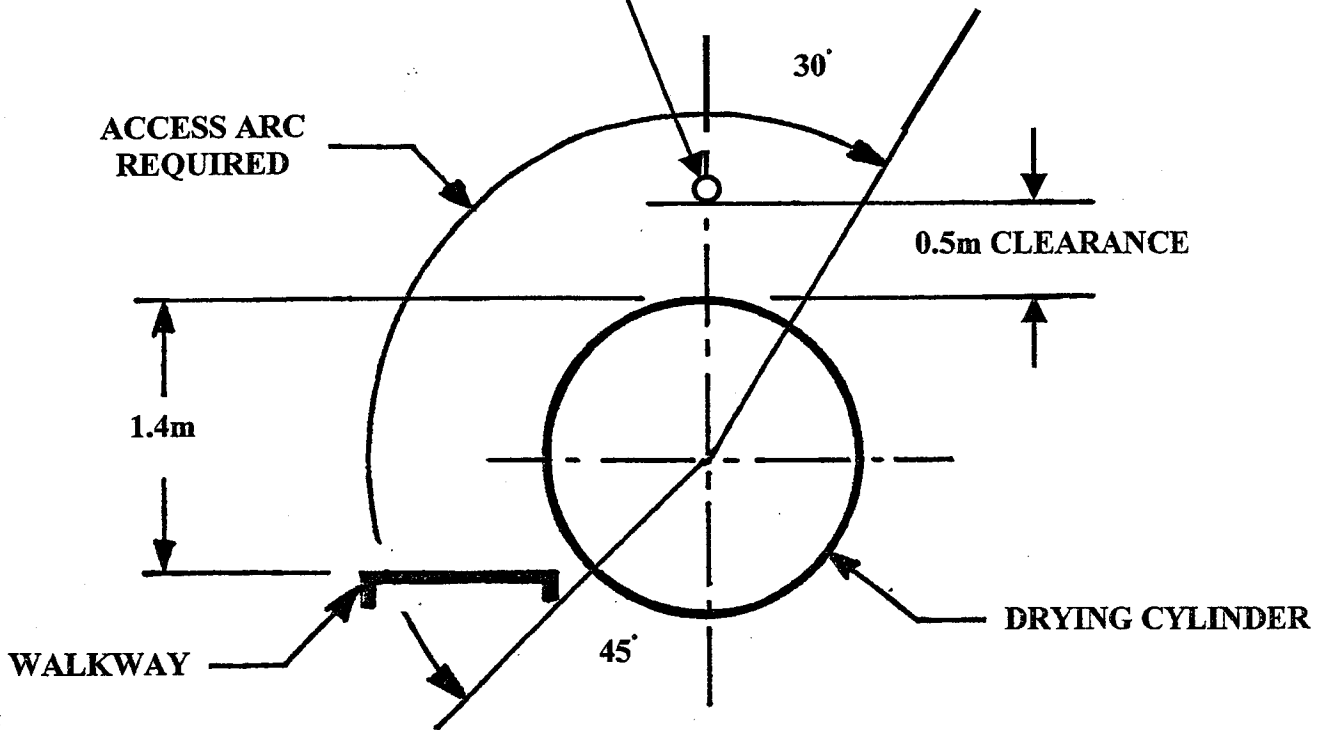
*\* Teflon is the registered Trade Name of Du Pont de Nemours*

Holscot  
Fluoroplastics  
Limited

**QUALITY CONTROL**  
**Work Instructions**

Section	13
Page	5 Of 5
Issue	4
Amendment	0
Date	JUNE 1988
Approved	

**SUPPORT OVER FULL LENGTH  
OF CYLINDER CAPABLE OF  
TAKING 40 KG**



CONTROLLED